

Hard Cheese and Semi-Hard Cheese Factory in Borg Al-Arab

Client

The National Company for Animal Production

Scope of Work

Detailed Design
Construction Supervision

Location

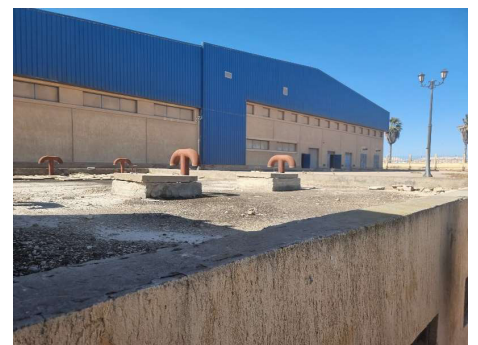
Borg Al-Arab, Egypt

Types of Activities

Architectural
Civil
Communications and Security Systems
Electrical
HVAC
Landscaping
Mechanical
Roads
Structural
Urban Design

The project spans an area of 43,200 m² and includes a cheese production factory, a mosque, and a power plant. The ground floor, covering 19,130 m², consists of a production line divided into 7 zones, a refrigerator zone with 7 refrigerators, a cheese storage room, and electromechanical services. The mezzanine floor, with

an area of 3,655.5 m², houses administrative rooms, two training halls, two operation and maintenance rooms, along with a service area including a kitchen and electrical services.



Hard Cheese and Semi-Hard Cheese Factory in Borg Al-Arab

