

Alinma Bank New Headquarters

Client

SACC - Saudi Arabian Construction Company
L.L.C

Scope of Work

Design Review

Location

Riyadh, Saudi Arabia

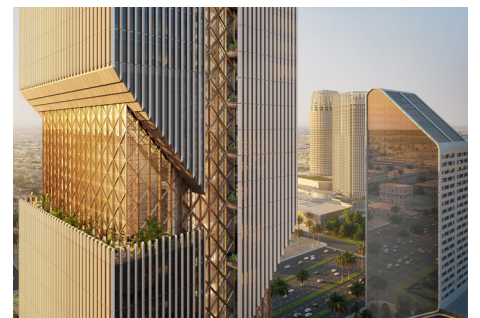
Types of Activities

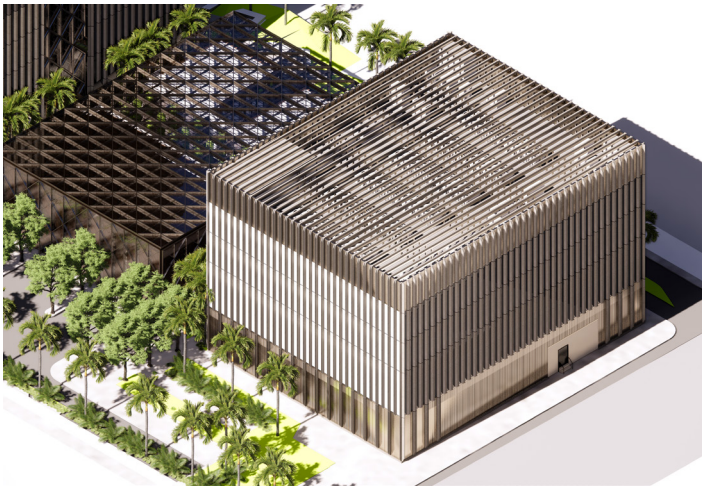
Architectural
Communications and Security Systems
Electrical
HVAC
Mechanical
Structures

On a total land area of 12,203 m²; the project comprises a high-rise building with a total BUA of 146,600 m² including 7 basements, ground, and 41 floors; in addition to a Tier 4 Data Center (G+3) with a total BUA of 6,200 m².



Alinma Bank New Headquarters





Alinma Bank New Headquarters