

# 1600 Staff Accommodation Units for ENEC

## Client

Trojan General Contracting

## Scope of Work

Conceptual Design  
Schematic Design  
Detailed Design  
Arch. of Record  
Concept Design Validation  
IFC

## Location

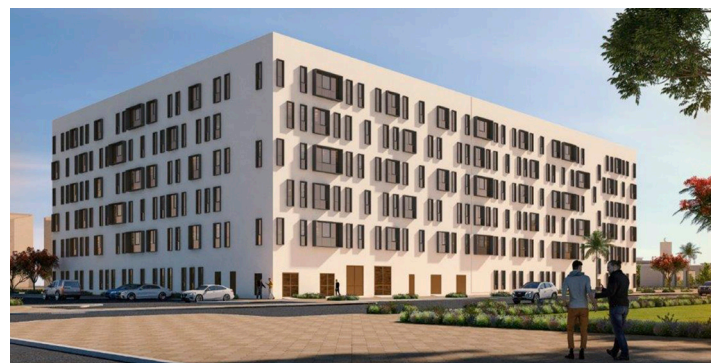
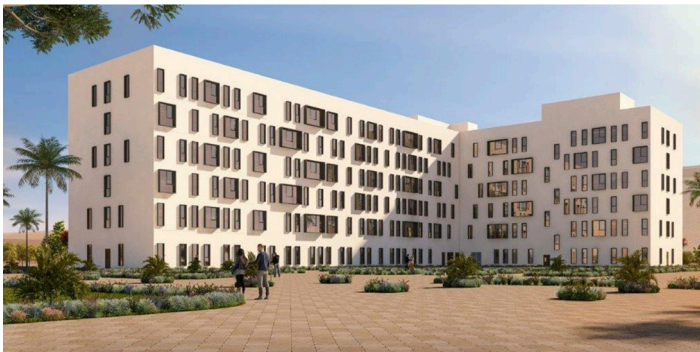
Western Region, UAE

## Types of Activities

Architectural  
Civil Works  
Communications and Security Systems  
Electrical  
HVAC  
Interior Design  
Landscaping  
Mechanical  
Roads  
Structural

The project comprises 1600 staff accommodation units (SAUs) and associated support facilities for the Emirates Nuclear Energy Corporation (ENEC). These SAUs will provide accommodation and amenities at the remote Barakah Nuclear Power Plant (BNPP) site to house the staff required to maintain plant operations in addition to the expected international and local visitors to the site. The project comprises two prototypes of buildings (G + 3/4/5) totaling to 10 staff accommodation buildings (total BUA:

80,895m<sup>2</sup>) along with a mess hall containing a central dining hall which provides catered meals to residents and laundry (total BUA: 8,637m<sup>2</sup>), gymnasium (total BUA: 1,247m<sup>2</sup>), barakah majlis (total BUA: 500m<sup>2</sup>), barakah center (total BUA: 2,000m<sup>2</sup>), and mosque (total BUA: 500m<sup>2</sup>) to meet the residents' daily needs.



1600 Staff Accommodation Units for ENEC



1600 Staff Accommodation Units for ENEC